



FOR SALE

THE DETAILS

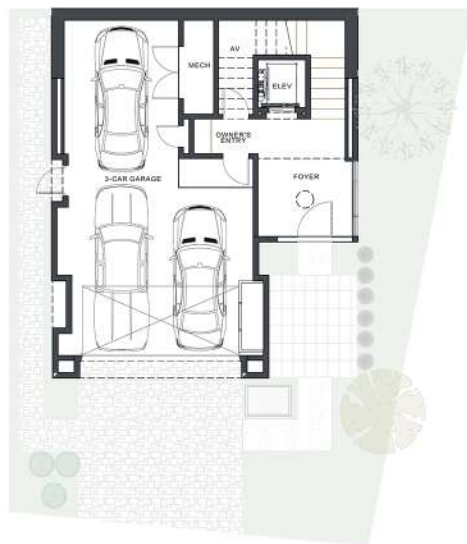


MODEL
Lot 4

BEDROOMS
4

BATHROOMS
4.5

SQUARE FEET
4,394 SF



BASEMENT



LEVEL 1



LEVEL 2

- CIRRUS C FLOOR PLAN
- 3-STORY W/ ELEVATOR
- 4 BEDROOM
- 4.5 BATH
- SEPARATE DINING
- OFFICE/GAME ROOM
- 3 CAR GARAGE
- 4,394 SF

SCOTT GRIGG

Grigg's Group powered by The Altman Brothers

480.540.5479

AZFINEPROPERTIES@COX.NET

© 2023 Cullum Homes' floor plans and elevations are copyrighted. Cullum Homes reserves the right to modify at any time the floor plans, features, specifications, and/or prices as needed to meet changing market conditions. The plans depicted in sales materials are preliminary and not intended to be used as construction documentation. Square footages for options, room dimensions, window sizes and locations, exterior fencing, gates, sidewalk and patio locations as depicted will vary depending on the lot, elevation style, and options selected. In addition, features shown in the model homes may be upgraded and not included in the base price. See sales person for specific details. ROC #092024. Sales and Marketing provided by Grigg's Group powered by The Altman Brothers. Subdivision Report has been received and will be provided upon request.